

# 212-226 WASHINGTON STREET

DOWNTOWN CROSSING | BOSTON MA

...up to 8,598 sf RETAIL



<b>Ground Floor</b> <b>3,665 SF</b>	2,332 SF THE WELL COFFEE HOUSE 1,103 SF BNC MARKET 220 SF CITIZENS BANK ATM	<b>Mezzanine</b> <b>333 SF</b>	333 SF BNC MARKET	<b>Second Floor</b> <b>4,600 SF</b>	3,656 SF COMMERCIAL 944 SF THE WELL COFFEE HOUSE
--	---	-----------------------------------	-------------------	--	---

# 212-226 WASHINGTON STREET



# 212-226 WASHINGTON STREET

p. 617 725 0200  
 e. joe@creboston.com  
 web www.creboston.com

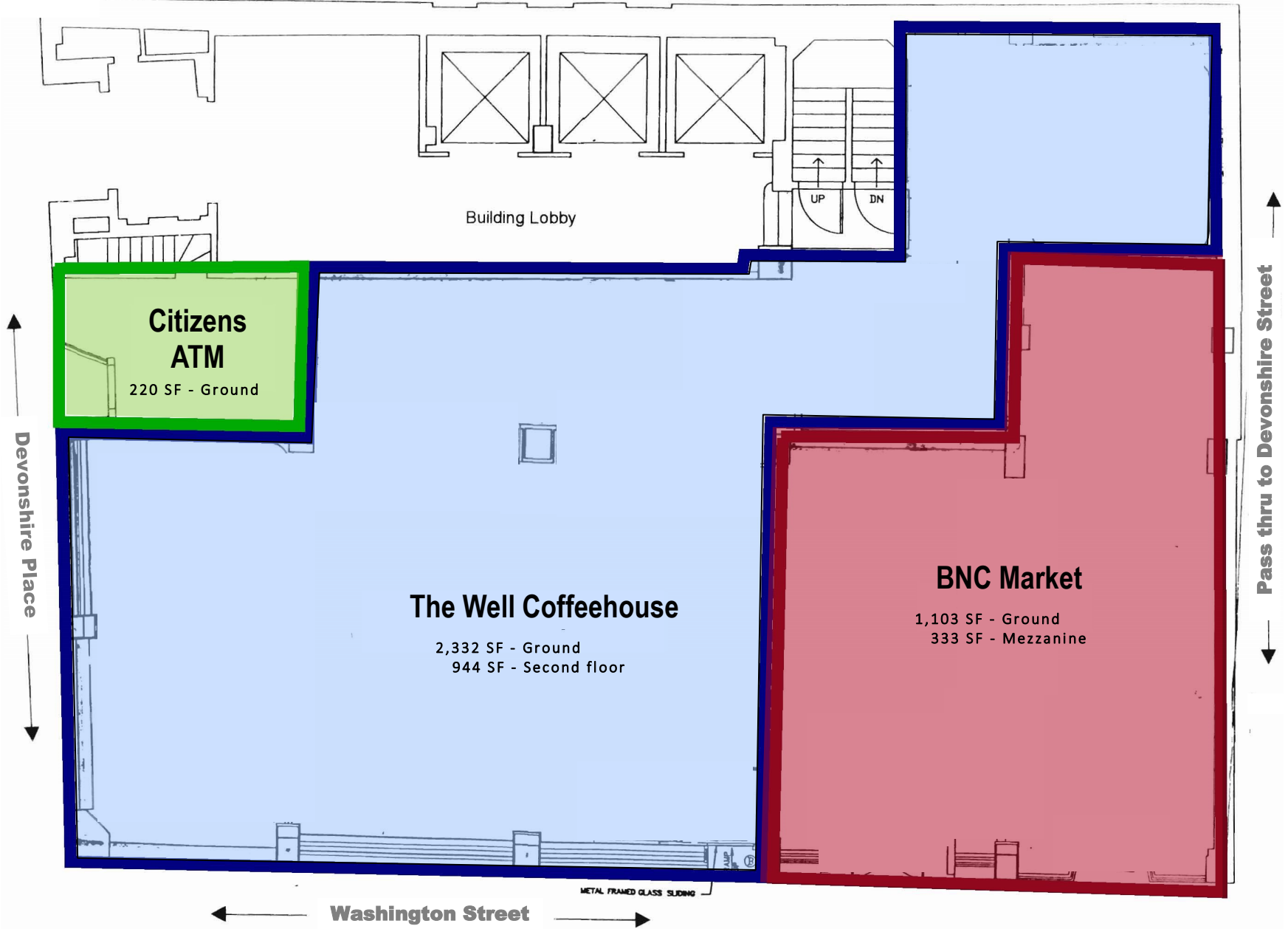
**Ground Floor Plan**

Up to 3,988 sf:  
 3,655sf + 333sf mezz

**Frontage**  
 Up to 110' total;

Citizens ATM  
 15' Devonshire Place  
 +  
 The Well Coffeehouse  
 30' Devonshire Place  
 50' Washington Street  
 +  
 BNC Market  
 30' Washington Street

**Ceiling Heights**  
 11'-7" to 15'



# 212-226 WASHINGTON STREET

p. 617 725 0200  
e. joe@creboston.com  
web www.creboston.com

## Second Floor Plan

4,600 rsf

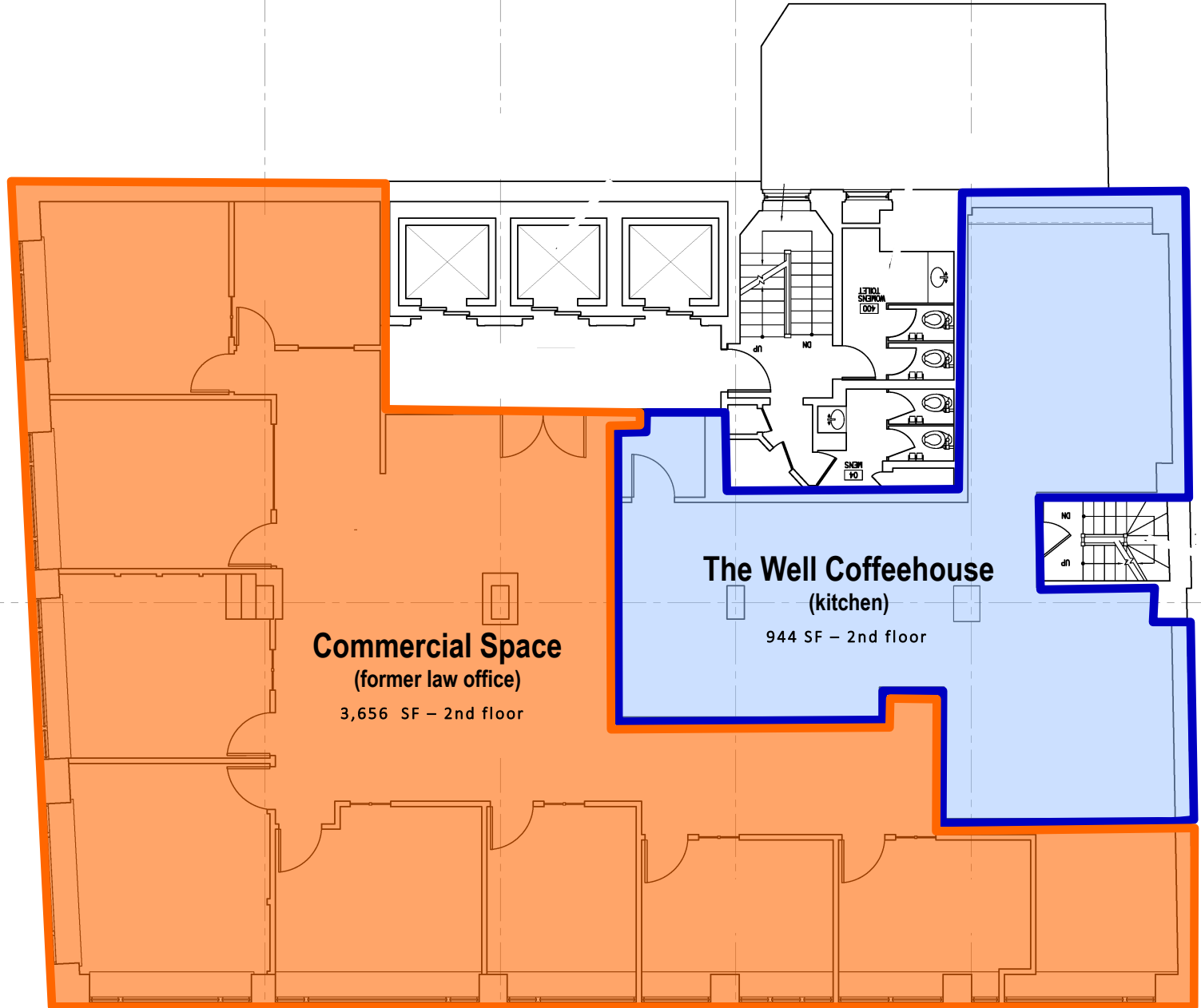
Frontage  
Approx. 130'

## Ceiling Heights

11' floor to slab

9' floor to finish

Devonshire Place



Washington Street