

# Retail Space Available

617 725 0200



Formerly the construction field office for neighboring Emerson College dorm project

Downtown Crossing;  
**Corner** of Boylston Place & Boylston Street

Approximately 3,611 sf;  
*(possibly subdivisible)*  
1,170 -Ground Entry/Upper Lvl  
1,136 -Lower Level  
1,305 -Finished Basement

Rent Quote: please call

RE Taxes & Operating: \$6.22/ sf (estimated)

Ceiling Heights (estimated):

- 8' finish on Upper Level to 13'5" at Str. Entry
- 8'-8' 11" at Lower Level
- 7'11"-8'8" at Basement Level

97' of Frontage (estimated):

- 17' on Boylston Street, plus
- 80' on Boylston Place

## CRE Brokerage

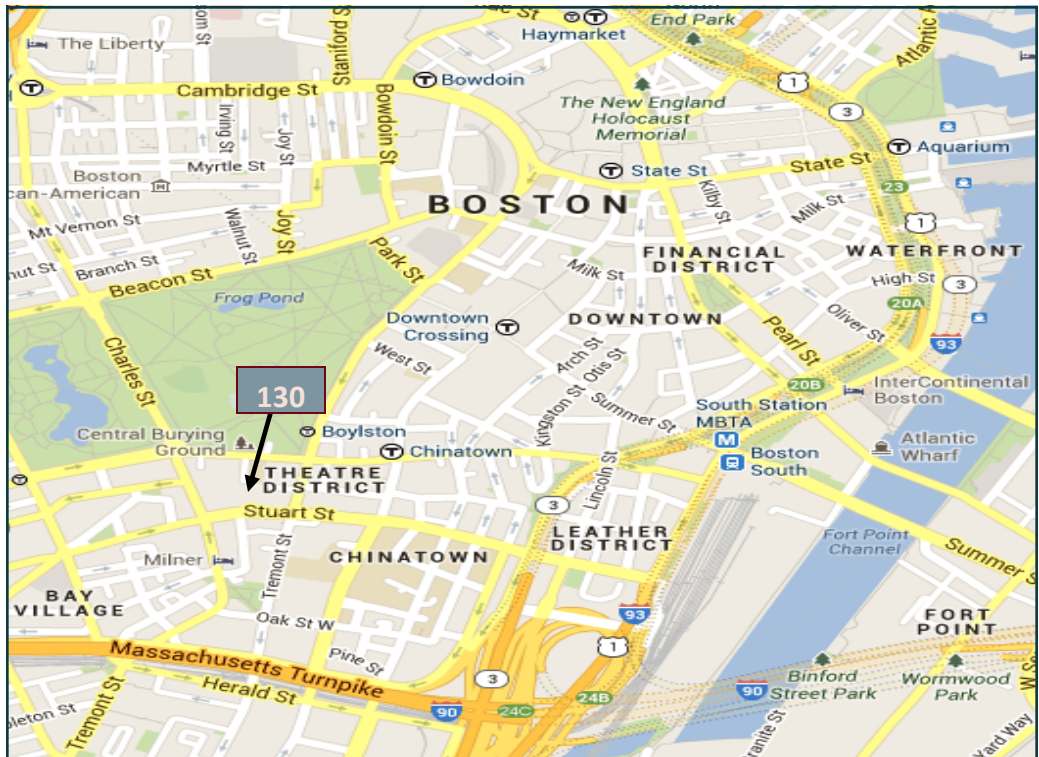
Sixty State Street  
Boston, MA 02109

Phone: 617 725 0200  
E-mail: [joe@creboston.com](mailto:joe@creboston.com)

Note: Every effort has been made to furnish the most accurate information available on this property. However, all statements and conditions contained herein are subject to errors, omissions, prior lease, sale or removal from the market without notice.

# 130 Boylston Street

Boston, MA 02110



# Retail Space Available

617 725 0200



## Floor Plans

- ground/upper level
- lower level
- finished basement

3,611 total rsf

### CRE Brokerage

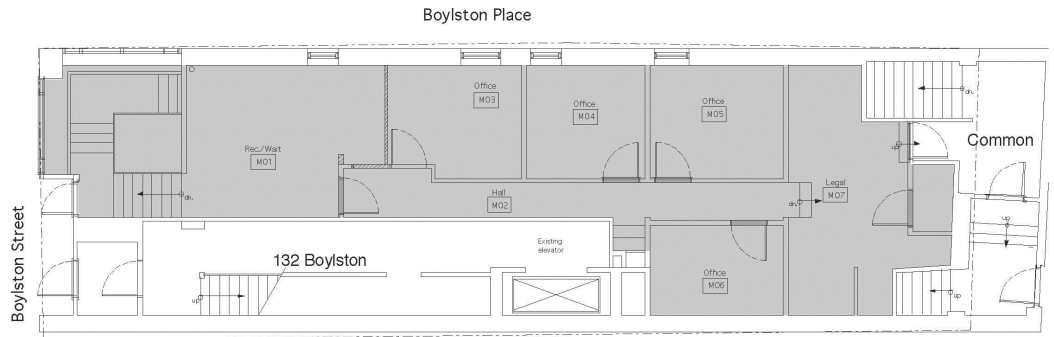
Sixty State Street  
Boston, MA 02109

Phone: 617 725 0200  
E-mail: joe@creboston.com

**Note:** Every effort has been made to furnish the most accurate information available on this property. However, all statements and conditions contained herein are subject to errors, omissions, prior lease, sale or removal from the market without notice.

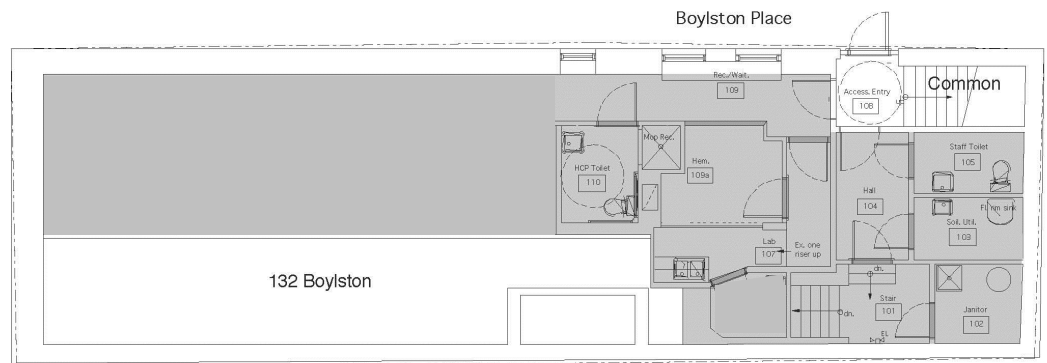
# 130 Boylston Street

Boston, MA 02110



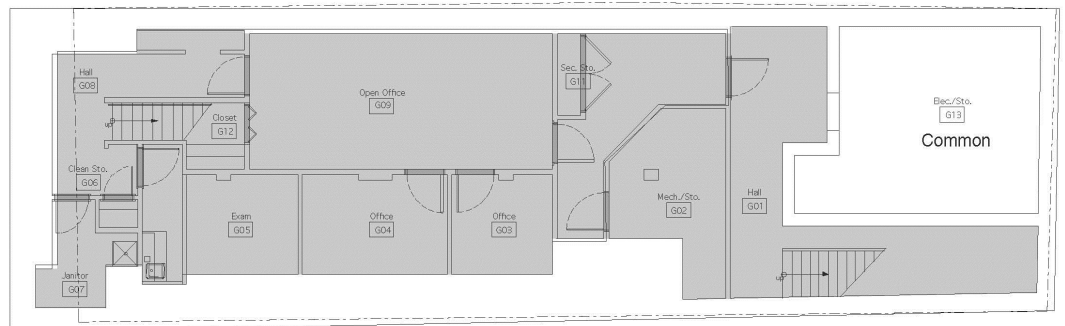
1,170 sq ft

1st Floor Plan (Boylston Street)  
47153-130 Boylston Street  
Area Calculation  
08-31-11  
1/8" = 1'-0"



1,136 sq ft

Ground Floor Plan (Boylston Place)  
47153-130 Boylston Street  
Area Calculation  
08-31-11  
1/8" = 1'-0"



1,305 sq ft

Basement Floor Plan  
47153-130 Boylston Street  
Area Calculation  
08-31-11  
1/8" = 1'-0"